



From Vision to Value

ORCID's 2022–2025 Strategic Plan

The core of our strategic focus for 2022–2025 is to **build commitment to and engagement** with ORCID as an **essential element of the research experience**, both for researchers and member organizations.

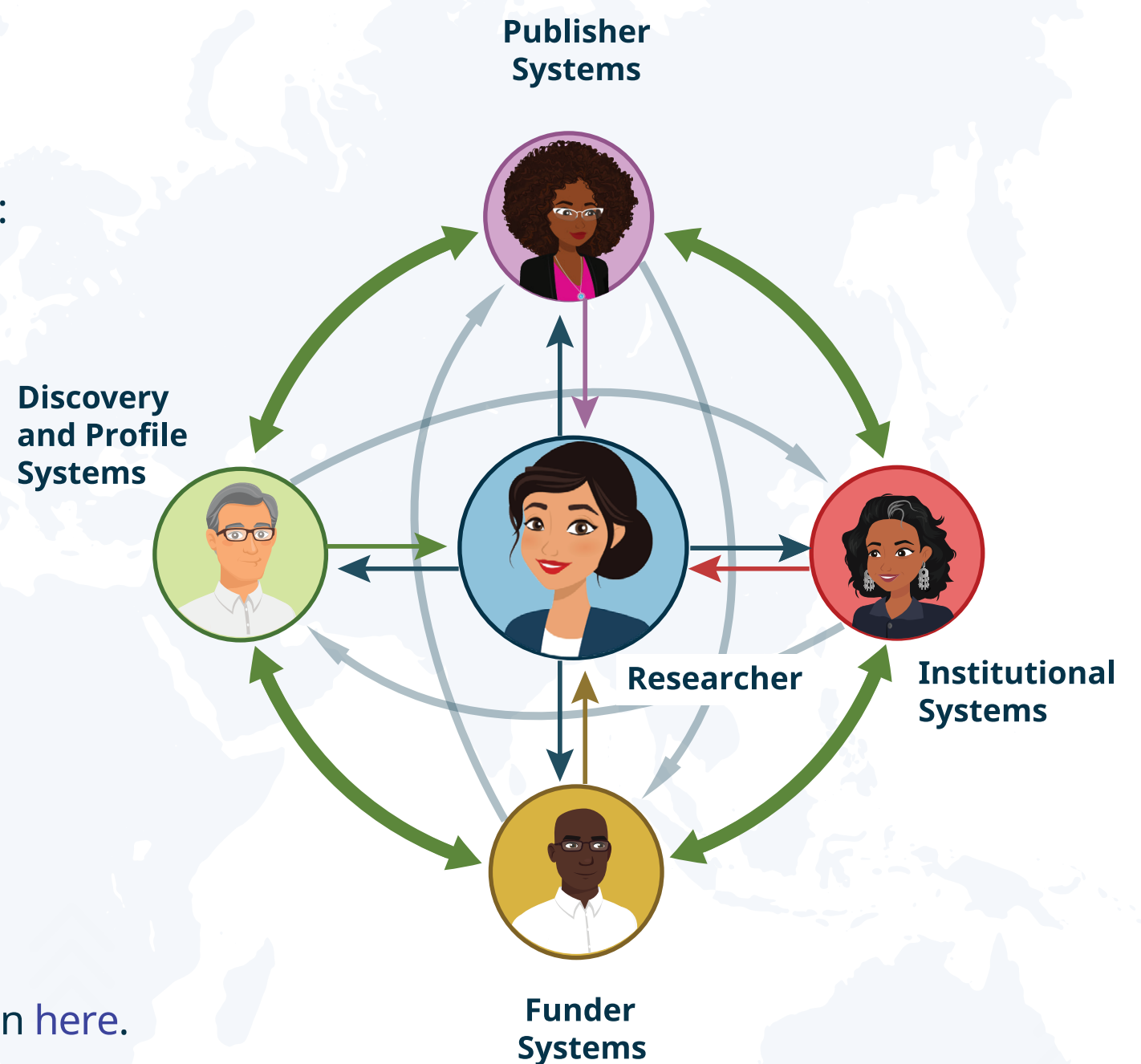
Our 2022–2025 Strategic Plan sets out our priorities for the next phase of ORCID's development in four strategic areas, increasing the incremental value that we provide to our stakeholders while maintaining focus on two core goals:

1. Reducing administrative burden for researchers
2. Helping our member organizations understand the impact of the research they facilitate or fund.

The central theses of this plan is that by building stakeholder commitment to and engagement with ORCID, we will in turn create more value for others and drive further participation by other stakeholders, perpetuating ORCID's virtuous circle.

The more fully populated, sufficiently complete ORCID records and integrated systems there are, the more value that stakeholders can gain from participating in ORCID. It is our goal to create the conditions to allow this to happen.

Share this summary with your colleagues, and read the full plan [here](#).



Increasing Value to Members

We will be more **proactive in delivering value** to member research institutions, rather than **simply enabling and expecting** them to integrate with our API.

We will equip our members with **more compelling ways to encourage their researchers** to use ORCID.

We will work with **influential organizations** such as **Funders and Government Agencies** to encourage the use of ORCID.

Increasing Value to Researchers

We will **reduce the effort** that researchers need to invest in **completing and updating** their ORCID records with activities such as improving workflows and guiding users to the most appropriate services to connect with.

We will **incentivize researcher participation** in ORCID with initiatives like encouraging member organizations to update and re-use ORCID data save researchers time.

Increasing Global Participation

To encourage membership in **low and lower-middle income countries**, we will move towards a fee structure based on **equity**, adjusted according to regional affordability, while also supporting the development of local expertise and communities of practice.

We will develop **new partnership models** with national or regional organizations to **spearhead organizational membership growth** in their locations.

Upholding Trust and Integrity

We will take a more proactive approach to improving **data quality**.

In order to **fulfill expectations of the reliability of our infrastructure**, we will improve resiliency through means such as moving our hosting to the cloud and implementing a high-availability architecture.

To ensure ORCID's **long-term sustainability**, we will **bolster ORCID's reserves**.